

Myers[®]

**Sewage & Effluent Pumps
Sizing Tables**

Sizing Our Pumps Is As Easy As

A

B

C

It's Easy To Size A Myers Pump, All You Need to Know Is:

- A - Pipe Size (1½", 2" or 3")**
- B - Total Pipe Length**
- C - Total Lift**

Example:

- A - Pipe Size = 2"
 - B - Pipe Length = 200'
 - C - Total Lift = 10'
- Pump required to pump raw sewage

Using our chart under 2" Solids Handling Sewage Pumps you will see the Myers SRM4 pumping 2" solids will produce 32 GPM through 200 feet of 2" pipe at 10 feet of lift. This is adequate for virtually all residential applications under these conditions.

SRM4

2" Discharge, 2" Pipe

PIPE LENGTH FEET	GPM				
	VERTICAL HEAD FEET				
	6	8	10	12	14
10	63	56	48	39	29
50	56	50	43	35	26
75	52	46	40	33	25
100	50	44	38	31	24
150	46	41	36	29	23
200	42	38	32	27	21
250	39	35	31	25	20
300	37	33	29	24	
400	34	30	26	22	
500	31	27	24	20	
600	29	26	23		
700	27	24	22		
800	25	23	20		
900	24	22			
1000	23	21			

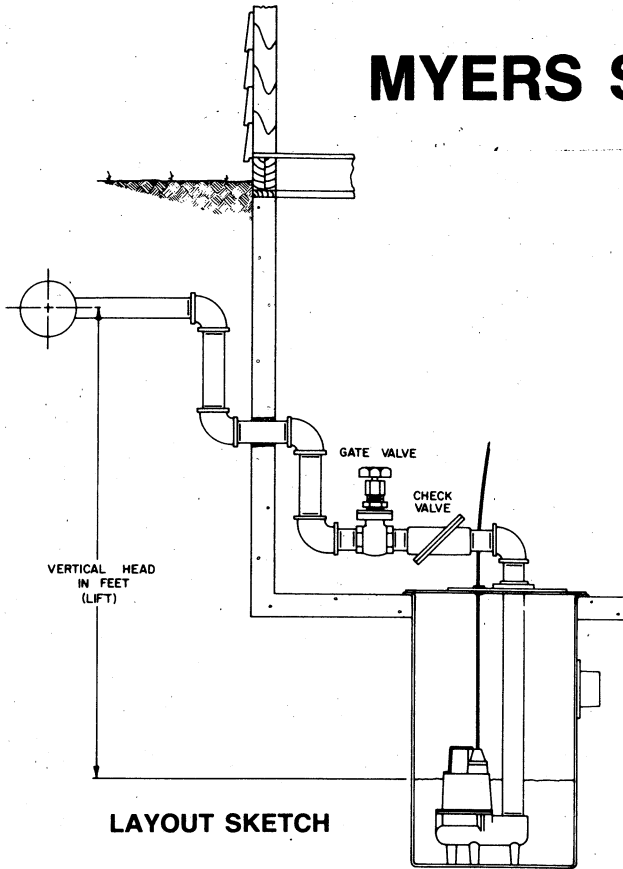
Helpful Hints:

Pipe size determines minimum flow.

- 1½" pipe requires a minimum flow of 15 GPM.
- 2" pipe requires a minimum flow of 20 GPM.
- 3" pipe requires a minimum flow of 45 GPM.

For further information call the Myers Application Experts at 419/289-1144.

MYERS SIZING TABLES



RECOMMENDED BASIN DIAMETERS

GPM	18"	24"	30"	36"	48"
20					
25					
30					
35	↓				
40					
45					
50					
60		↓			
70					
80					
90					
100			↓		
125					
150				↓	
175					
200					
225					↓

GALLONS/FOOT OF BASIN DEPTH	13.25	23.5	36.8	53	94.2
GALLONS IN 2 1/2' OF BASIN DEPTH	33.1	58.8	92.0	132.5	235.5

Select Minimum Basin Depth so that 2 1/2 ft. of Basin Depth in Gallons = Pump Capacity in GPM.

VELOCITY AND HEAD LOSS CHART FOR SDR-21 PIPE (Flow Coefficient C=150)

Flow GPM	1"		1 1/4"		1 1/2"		2"		2 1/2"		3"		4"		6"		8"	
	Q	V	H _f	V	H _f	V	H _f	V	H _f	V	H _f	V	H _f	V	H _f	V	H _f	
1	.30	.05	.19	.01	.14	.01												
2	.60	.16	.37	.05	.28	.03												
5	1.49	.90	.93	.28	.71	.15												
7	2.09*	1.68	1.30	.53	.99	.27												
10	2.99	3.25	1.86	1.02	1.41	.52												
15	4.48	6.88	2.79*	2.17	2.12*	1.11	1.35	.37										
20	5.98	11.72	3.72	3.69	2.83	1.89	1.80	.63	1.23	.25								
25	7.47	17.72	4.65	5.58	3.53	2.86	2.25*	.96	1.53	.37	1.03	.14						
30	8.97	24.84	5.58	7.82	4.24	4.01	2.70	1.34	1.84	.52	1.24	.20						
35	10.46	33.04	6.51	10.40	4.95	5.33	3.15	1.78	2.15*	.70	1.44	.27						
40			7.44	13.32	5.66	6.83	3.61	2.28	2.45	.89	1.65	.34	1.00	.10				
45			8.37	16.57	6.36	8.49	4.06	2.84	2.76	1.11	1.86	.42	1.12	.12				
50			9.30	20.14	7.07	10.32	4.51	3.45	3.07	1.35	2.06*	.52	1.25	.15				
60			11.16	28.23	8.48	14.47	5.41	4.84	3.68	1.89	2.48	.72	1.50	.21				
70					9.90	19.25	6.31	6.43	4.29	2.52	2.89	.96	1.75	.28				
75					10.60	21.87	6.76	7.31	4.60	2.86	3.10	1.09	1.87	.32				
80					11.31	24.65	7.21	8.24	4.91	3.23	3.30	1.23	2.00*	.36	.92	.05		
90							8.11	10.25	5.52	4.01	3.72	1.53	2.25	.45	1.04	.07		
100							9.01	12.45	6.13	4.88	4.13	1.86	2.50	.55	1.15	.08		
125							11.28	18.83	7.67	7.37	5.16	2.81	3.12	.83	1.44	.13		
150									9.20	10.33	6.19	3.94	3.74	1.16	1.73	.18	1.02	.05
175									10.73	13.75	7.22	5.24	4.37	1.49	2.02*	.23	1.19	.06
200											8.26	6.71	4.99	1.97	2.30	.30	1.36	.08
225											9.29	8.35	5.62	2.45	2.59	.37	1.53	.10
250											10.32	10.15	6.24	2.98	2.88	.45	1.70	.13
275											11.35	12.10	6.86	3.55	3.17	.54	1.87	.15
300													7.49	4.18	3.46	.64	2.04*	.18
325													8.11	4.84	3.74	.74	2.21	.20
350													8.74	5.56	4.03	.86	2.38	.23
375													9.36	6.31	4.32	.96	2.55	.27
400													9.98	7.11	4.61	1.08	2.72	.30
450													11.23	8.85	5.18	1.35	3.06	.37
500															5.76	1.65	3.40	.45
550															6.34	1.95	3.74	.54

The values in these charts are based on the average internal diameter of the pipe, the formula $V=Q/A$ and the Hazen-Williams formula.
 V = Velocity in Ft./Sec. H_f = Head loss in Ft. per 100 Ft. of Pipe Q = Flow in GPM * Min. GPM & Velocity Per Pipe Size for Liquids Containing Solids.

Sump Pumps

S25

1½" Discharge, 1½" Pipe

PIPE LENGTH FEET	GPM							
	VERTICAL HEAD FEET							
	6	8	10	12	14	16	18	20
10	27	26	24	23	21	19	16	11
50	28	25	23	22	20	18	15	10
75	25	23	22	21	19	17	14	10
100	24	23	22	20	19	17	14	9
150	24	23	22	20	18	16	13	8
200	24	22	21	19	17	15	12	8
250	21	20	20	18	17	15	11	7
300	21	20	18	17	16	14	11	7
400	20	19	18	16	15	13	10	7
500	19	18	17	15	14	12	9	6
600	18	17	15	15	13	11	8	6
700	17	16	15	14	12	10	8	5
800	16	15	14	13	11	9	7	5
900	16	15	14	12	11	9	7	5
1000	15	14	13	12	10	9	7	5

SSM33

1½" Discharge, 1½" Pipe

PIPE LENGTH FEET	GPM							
	VERTICAL HEAD FEET							
	6	8	10	12	14	16	18	20
10	30	29	28	26	24	22	17	11
50	29	28	27	25	23	20	16	10
75	28	27	26	24	22	19	15	9
100	28	27	25	23	21	18	14	9
150	27	26	25	22	20	17	13	8
200	26	25	23	21	19	16	12	8
250	24	22	22	20	18	15	11	7
300	24	23	21	19	16	14	11	7
400	22	21	19	17	15	13	10	7
500	21	19	18	16	14	12	9	6
600	19	18	16	15	13	11	8	6
700	18	17	15	14	12	10	8	5
800	17	16	14	13	11	9	7	5
900	16	15	14	12	11	9	7	5
1000	15	14	13	12	10	9	7	5

All Charts include: 1 Check Valve, 1 Gate Valve, 5 Elbows, and PVC Pipe SDR21 (C=150)

3/4" Solids Handling Effluent Pumps

ME3H

1½" Discharge, 1½" Pipe

PIPE LENGTH FEET	GPM						
	VERTICAL HEAD FEET						
	5	10	15	20	25	27	30
100	32	30	27	23	20	16	12
200	29	26	23	20	17	15	11
300	26	23	20	18	15	11	10
400	24	22	20	17	15	11	7
600	22	20	18	15	13	10	6
800	20	19	17	14	10	6	
1000	19	17	16	14	9	6	
1500	15	14	12	10	6		

ME3F

1½" Discharge, 1½" Pipe

PIPE LENGTH FEET	GPM						
	VERTICAL HEAD FEET						
	5	10	15	20	25	27	30
100	50	42	35	28	20	12	7
200	37	32	28	22	15	10	5
300	32	24	21	18	12	8	4
400	27	23	20	16	11	6	
600	23	21	18	13	10	5	
800	21	19	16	12	8	4	
1000	19	17	15	11	7	3	
1500	15	14	12	10	6		

ME3F

1½" Discharge, 2" Pipe

PIPE LENGTH FEET	GPM						
	VERTICAL HEAD FEET						
	5	10	15	20	25	27	30
100	65	57	48	37	23	15	8
200	58	50	42	32	20	14	5
300	49	42	35	28	18	12	4
400	44	39	32	26	17	11	4
500	41	36	31	23	16	11	3
600	38	33	28	22	15	10	
800	33	31	26	20	12	8	
1000	31	28	23	18	11	7	
1500	27	21	20	16	10	6	
2000	22	20	18	12	9	5	

NOTE: Do not size pump to right of heavy black line if liquid being pumped contains solids.

All Charts include: 1 Check Valve, 1 Gate Valve, 5 Elbows, and PVC Pipe SDR21 (C=150)

3/4" Solids Handling Effluent Pumps

ME40

1½" Discharge, 1½" Pipe

PIPE LENGTH FEET	GPM						
	VERTICAL HEAD FEET						
	5	10	15	20	25	27	30
100	50	42	35	28	20	12	7
200	37	32	28	22	15	10	5
300	32	24	21	18	12	8	4
400	27	23	20	16	11	6	
600	23	21	18	13	10	5	
800	21	19	16	12	8	4	
1000	19	17	15	11	7	3	
1500	15	14	12	10	6		

ME40

1½" Discharge, 2" Pipe

PIPE LENGTH FEET	GPM						
	VERTICAL HEAD FEET						
	5	10	15	20	25	27	30
100	65	57	48	37	23	15	8
200	58	50	42	32	20	14	5
300	49	42	35	28	18	12	4
400	44	39	32	26	17	11	4
500	41	36	31	23	16	11	3
600	38	33	28	22	15	10	
800	33	31	26	20	12	8	
1000	31	28	23	18	11	7	
1500	27	21	20	16	10	6	
2000	22	20	18	12	9	5	

ME50

2" Discharge, 2" Pipe

PIPE LENGTH FEET	GPM						
	VERTICAL HEAD FEET						
	10	20	30	35	40	45	50
100	79	69	58	51	42	32	19
200	70	61	50	43	35	26	12
300	65	57	46	40	31	23	11
400	60	52	44	39	30	22	10
500	55	49	40	34	28	20	9
600	52	46	38	32	27	19	8
700	50	44	36	31	24	18	7
800	49	42	33	30	23	17	6
1000	43	38	31	27	21	16	4
1200	41	37	30	23	20	13	
1500	37	34	25	22	19	12	
2000	32	28	22	19	15	11	

NOTE: Do not size pump to right of heavy black line if liquid being pumped contains solids.

All Charts include: 1 Check Valve, 1 Gate Valve, 5 Elbows, and PVC Pipe SDR21 (C=150)

3/4" Solids Handling Effluent Pumps

ME75

2" Discharge, 2" Pipe

PIPE LENGTH FEET	GPM						
	VERTICAL HEAD FEET						
	20	30	40	50	55	60	65
100	78	65	52	35	22	5	
200	68	58	45	29	18		
300	62	52	42	25	17		
400	58	50	40	24	16		
500	52	49	36	22	15		
600	51	43	34	21	13		
700	48	41	33	20	12		
800	46	39	31	19	11		
1000	41	35	28	18	10		
1200	35	32	25	16	9		
1500	34	29	23	13	8		
2000	31	26	20	12	7		

ME100

2" Discharge, 2" Pipe

PIPE LENGTH FEET	GPM							
	VERTICAL HEAD FEET							
	20	30	40	50	60	70	75	80
100	92	82	72	60	43	25	17	9
200	81	72	63	52	38	21	13	5
300	74	67	58	47	34	20	12	4
400	68	62	54	45	32	19	11	3
500	62	56	50	40	30	18	10	
600	60	53	49	38	28	17	9	
700	57	52	44	36	26	16	8	
800	54	50	42	34	25	15	7	
1000	49	43	38	32	23	14	6	
1200	45	40	34	29	22	13	5	
1500	41	36	32	26	21	12	4	
2000	36	32	29	23	18	11	3	

ME150

2" Discharge, 2" Pipe

PIPE LENGTH FEET	GPM								
	VERTICAL HEAD FEET								
	20	30	40	50	60	70	80	90	
100	103	95	86	76	64	50	32	13	
200	91	84	76	67	56	42	29	12	
300	82	76	70	62	52	40	25	11	
400	76	70	63	57	49	38	24	10	
500	71	65	58	52	43	35	23	9	
600	66	61	55	50	42	32	22	8	
700	62	58	53	48	41	31	20	7	
800	61	56	52	46	38	30	19	6	
1000	55	51	46	41	34	38	18	5	
1200	51	46	42	38	32	25	17	5	
1500	46	43	39	34	31	22	16	4	
2000	40	38	33	31	26	21	14	4	

NOTE: Do not size pump to right of heavy black line if liquid being pumped contains solids.

All Charts include: 1 Check Valve, 1 Gate Valve, 5 Elbows, and PVC Pipe SDR21 (C=150)

1½" Solids Handling Sewage Pumps

WHRH5

2" Discharge, 2" Pipe

PIPE LENGTH FEET	GPM							
	VERTICAL HEAD FEET							
	15	18	21	24	27	30	33	36
10	71	64	57	50	44	36	28	20
50	66	60	53	47	41	34	26	
75	63	57	51	46	40	33	26	
100	60	55	50	44	38	32	25	
150	56	52	47	42	36	31	25	
200	53	49	44	39	34	29	23	
250	50	46	42	37	33	28	22	
300	48	44	40	36	32	27	22	
400	44	41	37	33	30	25	20	
500	41	38	34	31	27	24		
600	39	36	33	29	26	22		
700	37	34	31	28	25	21		
800	35	32	30	27	24	20		
900	34	31	28	26	23	20		
1,000	32	30	28	25	22			

WHRH10

2" Discharge, 2" Pipe

PIPE LENGTH FEET	GPM											
	VERTICAL HEAD FEET											
	15	18	21	24	27	30	33	36	39	42	45	48
10	95	89	83	77	71	65	58	51	44	36	28	20
50	87	82	77	68	66	60	54	48	39	34	27	
75	83	78	73	66	63	57	52	46	39	33	26	
100	80	75	70	65	61	55	50	44	38	32	25	
150	74	70	65	61	56	52	47.5	42	37	31	25	
200	68	65	61	57	53	49	44	40	34	29	24	
250	65	62	58	54	50	46	42	37	33	28	23	
300	62	59	55	52	48	44	40	36	32	27	22	
400	57	54	51	48	43	41	37	34	30	25	20	
500	53	50	47	44	41	39	35	31	27	24		
600	49	47	44	42	39	36	33	30	26	23		
700	46	44	42	39	37	34	32	28	25	21		
800	44	42	40	37	35	33	30	27	24	21		
900	42	40	38	35	33	31	29	26	24	20		
1,000	41	39	36	34	32	30	28	25	22			

WHRH5

2" Discharge, 3" Pipe

PIPE LENGTH FEET	GPM							
	VERTICAL HEAD FEET							
	12	14	16	18	20	22	24	26
10	86	81	76	71	66	60	55	49
50	84	80	75	70	64	59	54	48
75	83	78	74	69	63	58	53	48
100	82	76	73	68	63	58	52	47
150	80	76	71	66	61	56	52	46
200	78	74	69	65	60	55	51	46
250	76	72	68	63	59	54	50	45
300	75	71	66	62	58	53	49	
400	72	68	64	60	56	52	47	
500	70	65	61	58	53	50	45	
600	67	63	59	56	52	48		
700	65	61	57	54	50	47		
800	63	59	56	52	49	46		
900	61	57	54	51	47			
1,000	59	56	53	49	46			

WHRH10

2" Discharge, 3" Pipe

PIPE LENGTH FEET	GPM						
	VERTICAL HEAD FEET						
	12	16	20	24	28	32	36
10	112	104	96	87	77	66	55
50	110	102	94	85	75	65	54
75	108	101	93	83	74	64	53
100	106	100	91	83	73	63	53
150	103	97	89	80	71	62	52
200	102	95	87	79	70	61	51
250	100	93	85	77	68	59	50
300	98	91	83	75	67	58	49
400	94	87	80	72	64	56	47
500	91	84	77	70	62	54	46
600	87	81	74	67	60	52	
700	84	78	72	65	58	51	
800	82	76	70	63	56	49	
900	79	73	67	61	54	48	
1,000	77	71	65	59	53	46	

All Charts include: 1 Check Valve, 1 Gate Valve, 5 Elbows, and PVC Pipe SDR21 (C=150)

2" Solids Handling Sewage Pumps

SRM4

2" Discharge, 2" Pipe

PIPE LENGTH FEET	GPM				
	VERTICAL HEAD FEET				
	6	8	10	12	14
10	63	56	48	39	29
50	56	50	43	35	26
75	52	46	40	33	25
100	50	44	38	31	24
150	46	41	36	29	23
200	42	38	32	27	21
250	39	35	31	25	20
300	37	33	29	24	
400	34	30	26	22	
500	31	27	24	20	
600	29	26	23		
700	27	24	22		
800	25	23	20		
900	24	22			
1000	23	21			

SRM4

2" Discharge, 3" Pipe

PIPE LENGTH FEET	GPM				
	VERTICAL HEAD FEET				
	4	6	8	10	12
10	82	74	65	54	47
50	80	72	63	53	46
75	78	71	62	53	
100	76	69	60	51	
150	73	66	58	49	
200	71	64	56	47	
250	69	61	54	45	
300	66	59	52	45	
400	63	56	49		
500	59	53	46		
600	56	50			
700	54	48			
800	51	46			
900	49				
1000	47				

All Charts include: 1 Check Valve, 1 Gate Valve, 5 Elbows, and PVC Pipe SDR21 (C=150)

2" Solids Handling Sewage Pumps

WHR5

2" Discharge, 2" Pipe

PIPE LENGTH FEET	GPM								
	VERTICAL HEAD FEET								
	6	8	10	12	14	16	18	20	
10	93	87	80	73	63	54	45	42	
50	82	76	70	63	56	48	39	28	
75	76	71	65	59	51	44	36	27	
100	71	66	61	55	48	42	34	25	
150	64	59	55	49	43	38	31	23	
200	58	54	50	45	40	35	28	22	
250	53	50	46	42	37	32	26	21	
300	50	47	43	39	34	30	25		
400	45	42	39	35	31	27	22		
500	41	38	34	32	28	24	20		
600	38	35	33	30	26	23			
700	35	33	31	28	24	21			
800	33	31	29	26	23	20			
900	32	30	27	25	22				
1000	30	28	26	24	21				

WHR7

2" Discharge, 2" Pipe

PIPE LENGTH FEET	GPM											
	VERTICAL HEAD FEET											
	6	8	10	12	14	16	18	20	22	24		
10	108	103	97	90	83	76	66	57	46	34		
50	94	89	83	77	71	65	57	49	40	30		
75	87	82	77	72	66	59	53	45	37	27		
100	81	77	72	67	61	56	49	42	34	26		
150	73	69	65	60	55	51	45	39	32	24		
200	66	63	59	55	50	46	40	35	29	22		
250	61	57	54	50	46	42	37	32	27	20		
300	57	54	50	47	43	39	35	31	25			
400	51	48	46	42	39	35	32	28	23			
500	46	44	41	38	35	32	28	24	21			
600	43	41	38	36	33	30	26	23				
700	40	38	35	33	30	28	25	22				
800	37	35	33	31	29	26	23	20				
900	35	34	32	30	27	25	22	20				
1000	33	32	30	28	26	24	22					

WHR10

2" Discharge, 2" Pipe

PIPE LENGTH FEET	GPM												
	VERTICAL HEAD FEET												
	6	8	10	12	14	16	18	20	22	24	26	28	30
10	129	124	118	113	106	101	94	85	77	68	57	45	32
50	111	106	101	96	91	86	79	72	66	57	49	39	27
75	102	98	93	89	84	78	73	66	60	53	45	35	25
100	96	92	87	82	78	73	68	62	56	49	42	34	24
150	85	82	78	74	69	65	61	55	50	45	38	31	23
200	77	74	70	66	63	59	55	50	46	40	35	28	21
250	71	68	65	61	57	54	50	46	42	37	32	26	
300	66	63	61	57	54	51	47	43	39	35	30	24	
400	59	56	54	51	48	45	42	38	35	32	27	22	
500	53	51	49	46	44	41	38	35	32	28	24	20	
600	49	47	45	43	40	38	35	32	29	26	22		
700	45	43	42	40	38	35	33	30	27	24	21		
800	43	41	39	37	35	33	31	28	26	23	20		
900	40	39	37	35	34	31	29	27	24	22			
1000	39	37	35	33	32	30	28	26	24	21			

All Charts include: 1 Check Valve, 1 Gate Valve, 5 Elbows, and PVC Pipe SDR21 (C=150)

2" Solids Handling Sewage Pumps

WHR5

2" Discharge, 3" Pipe

PIPE LENGTH FEET	GPM						
	VERTICAL HEAD FEET						
	6	8	10	12	14	16	18
10	115	107	100	91	80	78	54
50	111	104	96	87	77	65	52
75	108	101	94	85	75	63	51
100	105	99	92	83	73	61	48
150	102	95	87	78	69	59	46
200	98	91	83	75	66	56	45
250	94	87	80	72	63	53	
300	90	84	77	69	60	51	
400	84	78	72	64	56	48	
500	79	73	67	60	52		
600	75	69	63	56	49		
700	71	65	60	54	47		
800	67	62	57	51			
900	64	59	54	48			
1000	62	56	51	45			

WHR7

2" Discharge, 3" Pipe

PIPE LENGTH FEET	GPM									
	VERTICAL HEAD FEET									
	6	8	10	12	14	16	18	20	22	
10	135	128	121	113	105	95	84	71	56	
50	131	124	117	109	101	91	80	68	54	
75	127	121	114	106	97	88	77	65	52	
100	125	118	111	103	95	85	75	63	51	
150	119	113	106	98	90	81	71	60	48	
200	114	107	101	94	86	77	68	57	46	
250	110	103	97	89	82	74	65	55		
300	105	99	93	86	78	70	62	52		
400	98	92	86	80	73	66	57	49		
500	92	86	81	75	68	61	53	45		
600	86	81	76	70	64	57	50			
700	82	77	72	66	60	54	47			
800	78	73	68	63	57	51	45			
900	74	69	65	60	54	49				
1000	71	67	62	57	52	46				

WHR10

2" Discharge, 3" Pipe

PIPE LENGTH FEET	GPM								
	VERTICAL HEAD FEET								
	12	14	16	18	20	22	24	26	28
10	142	136	128	120	110	100	88	73	56
50	137	131	123	115	106	95	83	70	55
75	134	127	119	111	102	92	80	67	52
100	131	124	116	108	99	90	78	65	51
150	124	118	111	102	94	84	72	61	47
200	119	112	105	97	89	80	70	58	45
250	114	107	100	93	85	76	66	55	
300	109	103	95	88	81	72	63	52	
400	101	95	88	82	74	67	58	48	
500	94	89	82	76	69	61	53	45	
600	88	83	77	71	64	57	50		
700	84	78	73	67	61	54	47		
800	80	74	69	64	58	51	45		
900	76	71	66	60	55	49			
1000	72	67	62	57	52	46			

All Charts include: 1 Check Valve, 1 Gate Valve, 5 Elbows, and PVC Pipe SDR21 (C=150)

2" Solids Handling Sewage Pumps

MW50

2" Discharge, 2" Pipe

PIPE LENGTH FEET	GPM						
	VERTICAL HEAD FEET						
	10	15	20	25	30	35	40
100	96	75	45	18			
200	78	60	36	16			
300	67	51	32	12			
400	58	44	24	10			
500	52	39	22	9			
600	47	34	20	5			
800	40	29	16				
1000	34	24	12				
1200	30	22	10				
1400	27	19	8				

MW50

2" Discharge, 3" Pipe

PIPE LENGTH FEET	GPM						
	VERTICAL HEAD FEET						
	10	15	20	25	30	35	40
100	122	92	60	27			
200	110	82	53	24			
300	100	75	50	20			
400	92	69	44				
500	85	64	39				
600	79	59	37				
800	70	52	33				
1000	63	46	31				
1200	57	42	30				
1400	53	39					
1800	45	33					

MWH50

2" Discharge, 2" Pipe

PIPE LENGTH FEET	GPM						
	VERTICAL HEAD FEET						
	10	15	20	25	30	35	40
100	106	90	70	54			
200	90	77	63	44			
300	80	68	50	40			
400	71	61	47	30			
500	65	55	43	29			
600	60	50	38	26			
800	53	45	34	25			
1000	47	40	30	20			
1200	42	35	25				
1400	38	32	24				

MWH50

2" Discharge, 3" Pipe

PIPE LENGTH FEET	GPM						
	VERTICAL HEAD FEET						
	10	15	20	25	30	35	40
100	130	108	93	67	41		
200	120	100	82	62	37		
300	110	92	76	60	35		
400	104	86	74	58	34		
500	98	81	68	47	32		
600	92	77	64	46	30		
800	83	70	58	45	28		
1000	70	59	54	38	25		
1200	65	56	48	35			
1400	62	52	40	33			
1800	57	47	34	20			

NOTE: Do not size pump to right of heavy black line if liquid being pumped contains solids.

All Charts include: 1 Check Valve, 1 Gate Valve, 5 Elbows, and PVC Pipe SDR21 (C=150)

2" Solids Handling Sewage Pumps

MW100

2" Discharge, 2" Pipe

PIPE LENGTH FEET	GPM							
	VERTICAL HEAD FEET							
	20	25	30	35	40	45	50	55
100	93	83	67	51	31	10		
200	75	67	54	39	25	8		
300	64	57	45	34	20			
400	57	50	40	29	18			
500	52	45	36	26	16			
600	48	41	33	23	12			
800	40	34	27	19	9			
1000	34	28	22	16	8			
1200	28	25	20	14				
1400	26	20	17	12				

MW100

2" Discharge, 3" Pipe

PIPE LENGTH FEET	GPM							
	VERTICAL HEAD FEET							
	20	25	30	35	40	45	50	55
100	125	110	92	66	40	10		
200	120	103	85	63	35	0		
400	106	92	77	50	33			
600	97	84	70	48	30			
800	89	77	64	46	25			
1000	83	71	59	43	23			
1200	78	67	56	40	22			
1400	74	64	53	38				
1600	70	61	50	36				
2000	65	56	46	33				

MW150

2" Discharge, 2" Pipe

PIPE LENGTH FEET	GPM							
	VERTICAL HEAD FEET							
	20	25	30	35	40	45	50	55
100	123	118	100	87	72	56	40	23
200	96	89	80	70	58	46	33	16
300	82	75	67	60	50	39	28	15
400	72	66	60	52	44	34	25	14
500	66	61	54	45	40	31	23	12
600	62	56	50	43	36	28	21	10
800	53	48	43	37	30	23	16	
1000	47	42	37	31	26	20	14	
1200	42	37	33	28	23	17	13	
1400	37	33	29	24	20	15	10	

MW150

2" Discharge, 3" Pipe

PIPE LENGTH FEET	GPM							
	VERTICAL HEAD FEET							
	20	25	30	35	40	45	50	55
100	--	156	146	126	106	76	52	25
200	160	148	134	116	96	70	46	23
400	141	128	116	100	84	64	43	22
600	127	116	105	92	76	57	40	21
800	116	105	95	82	67	52	34	20
1000	108	98	88	76	63	48	33	18
1200	100	92	83	71	61	46	31	16
1400	95	86	78	68	57	45	30	
1600	90	82	74	65	54	42	29	
2000	82	75	68	59	51	39	27	

NOTE: Do not size pump to right of heavy black line if liquid being pumped contains solids.

All Charts include: 1 Check Valve, 1 Gate Valve, 5 Elbows, and PVC Pipe SDR21 (C=150)

2" Solids Handling Sewage Pumps

MW200

2" Discharge, 2" Pipe

PIPE LENGTH FEET	GPM							
	VERTICAL HEAD FEET							
	20	25	30	35	40	45	50	55
100	135	127	114	104	88	75	62	50
200	106	98	90	81	72	62	51	40
300	87	83	77	70	62	54	44	36
400	80	74	68	62	55	47	39	30
500	74	67	62	56	50	43	36	28
600	68	63	59	53	48	40	33	25
800	59	55	50	45	40	34	27	21
1000	53	49	45	40	34	27	23	18
1200	47	44	40	35	30	25	21	16
1400	42	39	35	31	27	22	18	14

MW200

2" Discharge, 3" Pipe

PIPE LENGTH FEET	GPM							
	VERTICAL HEAD FEET							
	20	25	30	35	40	45	50	55
100	--	174	166	150	130	110	84	60
200	178	165	153	138	120	98	76	55
400	156	144	132	118	104	86	69	51
600	140	127	118	106	95	79	64	47
800	127	117	108	97	86	72	59	43
1000	118	109	100	89	80	67	54	41
1200	110	102	94	84	75	63	52	38
1400	103	96	88	79	71	60	50	36
1600	99	92	84	76	68	58	48	
2000	90	83	77	69	62	54	44	

NOTE: Do not size pump to right of heavy black line if liquid being pumped contains solids.

All Charts include: 1 Check Valve, 1 Gate Valve, 5 Elbows, and PVC Pipe SDR21 (C=150)

Myers®

F. E. Myers, 1101 Myers Parkway, Ashland, Ohio 44805
419/289-1144 • Fax: 419/289-6658